

EAST WEST SCHOOL OF ARCHITECTURE'S

# THE FRAME

EW SA

Volume II Oct. Nov. Dec 2022



“Inevitable  
Architecture”

## HIGHLIGHTS:

- Cover Story .....2  
The Exposure.....3  
Abstract & Extract.....4  
Studio 'n' Beyond .....5-6  
Hands on Paper.....7  
Extra Brainssss.....8



E  
X  
H  
I  
B  
I  
T  
I  
O  
N  
  
2022

Volume II Oct. Nov. Dec 2022

HIGHLIGHTS & COVER STORY



## Editor's Vocal:



Architecture is the precious gem in the world; Architects have always innovated—in structures, materials, design and construction processes. Architecture is those buildings that creatively enhance living and elevate the human spirit and thus is Inevitable Architecture.

Ar. Chandan kumar Rajak (Dean, Academics)

## Academic Exhibition

The Academic Exhibition at EWSA inaugurated by our honorable Chair Person Mrs. Rashmi Ravikiran presents the best of the visions and designs over which our students have been sweating since the previous semesters. The aim of this exhibition is not only to showcase their academic works but also appreciate the hard-work, skills, creativity involved while being steered to reach the final design solutions.

## ► Understand-Heritage-Voyage

An educational tour for the 4th and 6th semester students was organised to Goa to study the Portuguese Colonial settlements in India. The tour was mentored and guided by Ar. Kalaivani M and Ar. Nitin Kulkarni. The trip not only helped the students to experience the vastness of Local Architecture but also enhance sensitivity towards Portugal Architecture.



## ► Understand-Heritage-Voyage

## ► GET TOGETHER-LEARN-EXPERIENCE-FUN

## ► Learn-Exposure-Opportunity-Product

## ► GET TOGETHER-LEARN-EXPERIENCE-FUN



The students of EWSA actively participated in the Annual NASA Convention that was conducted by School of Architecture, CHRIST (Deemed to be University) scheduled from 01 - 04 June, 2022. The students witnessed over 4700 students in attendance and also got the opportunity to interact with renowned architects and industrialists of the nation's architectural fraternity. Our students also participated in a number of workshops, seminars, master classes, and keynotes, along with a plethora of on-the-spot events, cultural events and cultural competitions that were scheduled during the convention.



## ► Learn-Exposure-Opportunity-Product

A research approach used to generate an in-depth, multi-faceted understanding of a product used in design will always focus on better results in terms of utilizing the product.

Under the guidance of Ar. Kalavani M and Ar. Nitin Kulkarni, a site visit to EBCO showroom was conducted for the 7th semester students of EWSA. The students had an authentic and accurate experience of the space and the various architectural and interior hardware fittings manufactured by EBCO. The students not only gained more technical and practical knowledge about hardware and their technology, but also understood the application of these products in Interior Projects.

► CONSTRUCT-EXPERIENCE-AESTHETICS

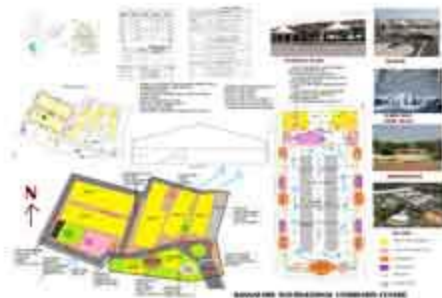
- Construct-Experien -Aesthetics
- Study-Document-Understand



Embellishing the beauty of any space in proportion of interior spaces offering solutions for acoustics, heat and moisture resistance, improving life span, use of decorative and economic lighting system, customized design with variety of materials can all be offered in false ceiling.

The Interior Design Workshop was conducted for all the students of EWSA scheduled from 24th-26th November, 2022. This workshop helped the students to not only understand the process of making of the false ceiling but also gain hands on experience which will be always remembered by them.

► STUDY-DOCUMENT-UNDERSTAND



Case study and documenting information gives one various ideas and let them peek into the minds of various architects who used their years of experience and dedicated their time to creating such fine structures.

As a part of Architectural Design curriculum, the students conducted case studies for their AD Studio with respect to their design topic.

The AD-4 Studio dealt with Cluster and Apartment Development project and hence conducted case study of Jal Vayu Vihar designed by the Kanade brothers.

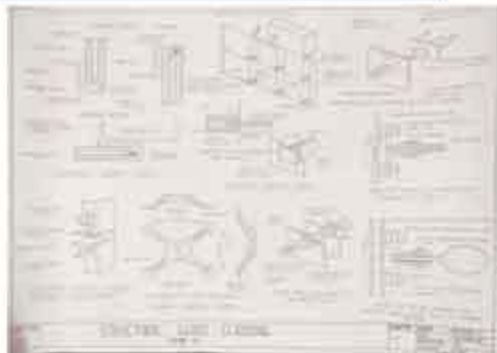
The AD-6 Studio dealt with Science Museum project and hence conducted case studies of Chitrakala Parishad and Visweswariah Science Museum.

The AD-8 Studio dealt with Urban Design project and hence conducted case studies of K R Market and Shivajinagar.

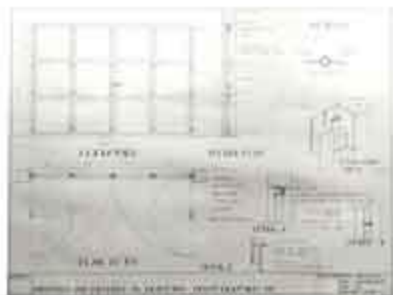
The AD-8 Studio dealt with Urban Design project and hence conducted case studies of K R Market and Shivajinagar.



A D - 4



M M B C - 6



M M B C - 4



A D - 8



W D - 1



H O A - 4



I D

**STUDIO:**

Elementary fundamentals and principles that help kick start the designing process are the key to the Studio. Great designs could be achieved by keeping the simple principles in mind.



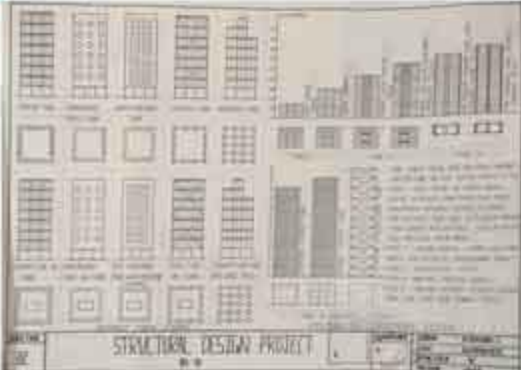
I D



A D - 6



B S - 6





CELEBRATING CHRISTMAS @ EWSA

PARTICIPATION IN AAKRUTI EVENT - EWIT CAMPUS

## BEYOND...

Participation, team work, goal setting when accompanied with fun, enthusiasm and enjoyment promotes social and cultural gatherings.



DEEPAVALI 2022 @ EWSA





Spider Plants –  
While I hate the name,  
Spider plants absorb toxins  
including formaldehyde,  
styrene, carbon monoxide, and benzene.



English Ivy –  
Reduces mold and  
feces as well as removes  
formaldehyde.



Peace Lily –  
Reduces chemical toxins, fillers, benzene, trichloroethylene, formaldehyde alcohols,  
acetone, and VOCs that are in harsh cleaning products. I want to note that the  
Peace Lily is toxic for pets and kids, so be sure to keep it somewhere safe.

Snake Plant–

This plan removes toxins and is nearly indestructible! The Snake Plant  
would be best suited in a bedroom, as it maintains a healthy amount  
of oxygen in the air.



*WHEN IT COMES TO PLANTS WE CONSIDER IT AS RELAX, BEAUTIFY OUR HOMES, PROVIDE SHADE AND PRIVACY, BLOCK NOISE, AND PREVENT EROSION. BUT CERTAIN PLANTS ARE GROWN FOR ITS PURPOSE .*

Cyperus–

This are excellent  
water purifiers.  
They remove excess  
nutrients from the  
water as well as oil and  
bacteria such as E. coli  
and Salmonella.e air.



### Mentor Inks....

Plants play a significant role  
in Landscape design. As an  
landscape architect plants  
purpose with aesthetics is  
crucial part in design  
approch....



Ar. Kalaivani Keshavamrthy



Cattail, typically growing between 5 and 10 feet tall, can remove metals such as  
zinc, cadmium, lead and nitrate from water.

## TRACE ME....

(NAME THE ARCHITECT)

A	C	D	B	C	H	A	R	L	E	S	C	O	R	R	E	A	P	M	T	A
L	B	J	V	V	B	E	I	C	K	T	R	M	O	E	D	M	L	P	R	F
K	T	I	U	O	D	F	S	P	L	K	L	E	D	Y	N	U	B	X	Z	S
A	M	F	M	R	U	O	N	T	H	H	U	C	P	L	I	N	M	R	E	A
R	T	C	Q	A	N	V	S	S	R	Z	B	Q	U	T	V	E	G	K	V	N
U	Q	B	H	S	L	U	O	H	L	X	Z	P	R	I	N	W	Z	T	F	J
S	A	N	J	A	Y	P	U	R	I	A	J	A	O	I	A	S	Y	I	L	A
V	U	J	C	Z	I	G	A	Z	Y	F	O	W	Z	A	K	A	K	K	A	Y
E	T	I	H	J	T	P	O	T	K	J	G	P	Q	X	T	S	H	A	W	M
H	A	I	C	A	I	A	L	A	E	H	L	M	V	L	U	M	T	A	E	O
N	A	A	N	Y	N	X	K	E	N	L	O	I	N	D	Y	A	P	T	R	H
K	A	L	U	R	A	T	A	G	R	I	A	W	A	G	H	V	T	I	J	E
S	B	I	J	O	Y	J	A	I	N	G	P	A	L	I	C	T	A	S	A	K
I	U	J	T	H	A	F	E	E	Z	C	O	N	T	R	A	C	T	O	R	D
P	A	R	B	C	H	I	T	R	A	V	I	S	H	W	A	N	A	T	H	F

### CLUE:

CEPT UNIVERSITY, KALA ACADEMY, HORNBILL HOUSE, IIT KANPUR, SABARMATI RIVERFRONT DEVELOPMENT PROJECT, 42 KOLKATA, TERI, STUDIOS 90, BAMBOO MP PAVILION



### MADE FOR EACH OTHER

1.	A.
2.	B.
3.	C.
4.	D.
5.	E.

### WORDJILL

- B - - J K - - L - F -
- I - F - L T - E -
- C - L - - - E - M
- ST. - - - I L C - - T - - R - L
- L - A - I N - T - - - R
- T - J M - - - L
- F - - L - - - W - - - R
- O - - - A H - - S -
- R - - I E H - - - E
- V - - L - S - - - - Y E

### What's Next:

- Interior Installation
- Hands-On Workshop
- Academic Tour



WORDJILL

1. CHANDERPRASAD JOSHI  
 2. LEARNING TOWER 6, TUMBAVALI, TRAVLING WATER, KOLKATA HOSE  
 3. LAKSHMIKANTA ZEPPEL TOWER 3, CROSSING/451 BASU, CALCUTTA  
 4. HORN BILL HOUSE IN VILLA SAVOIE

<https://www.instagram.com/cept>  
<https://www.facebook.com/cept>  
[mail@cept.ac.in](mailto:mail@cept.ac.in)  
<http://www.cept.ac.in>

MADE FOR EACH OTHER  
 1-C, 2-E, 3-A, 4-B, 5-D

ANSWERS